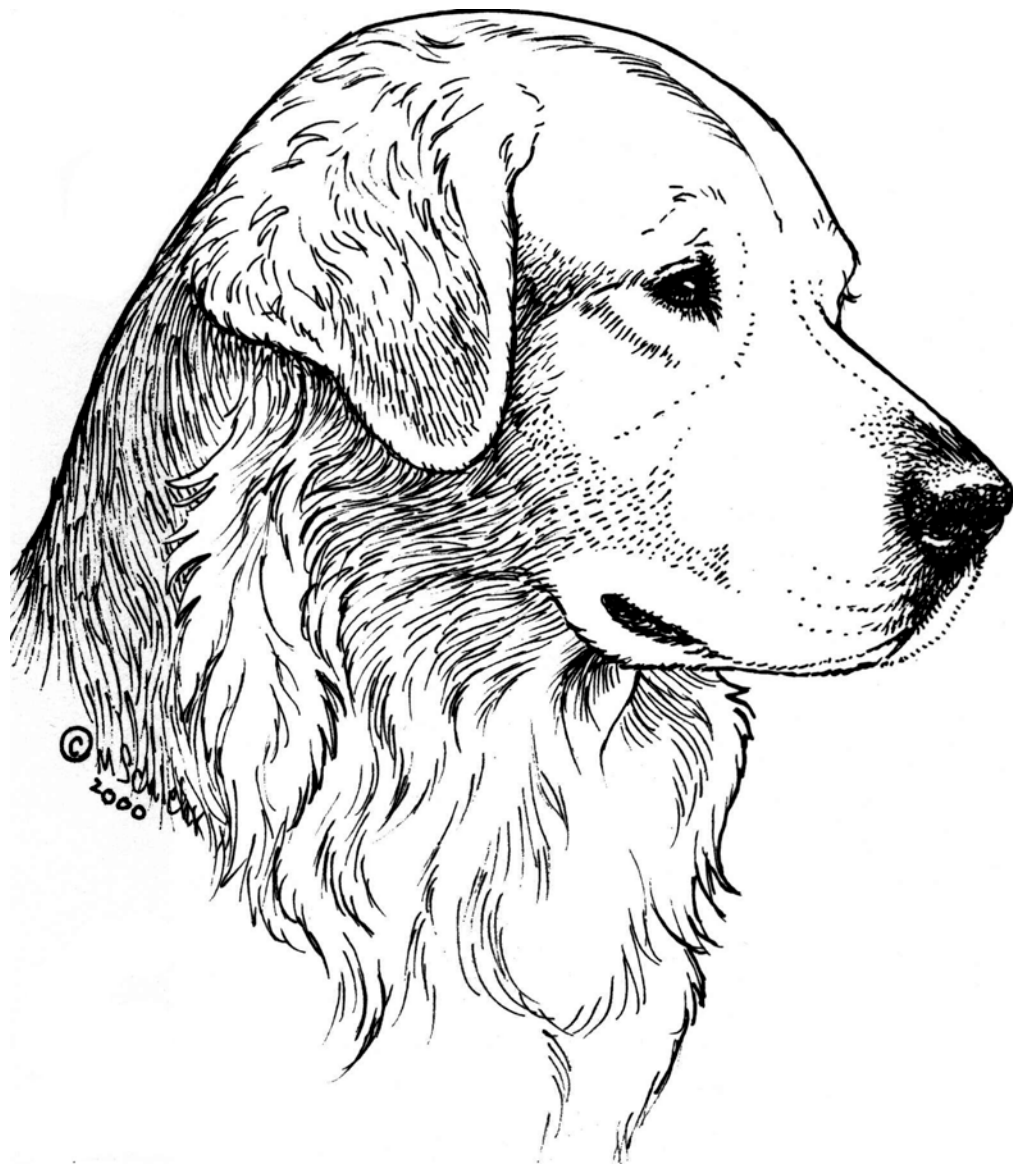


The Golden Retriever: An Illustrated Commentary On the Breed Standard



The Golden Retriever Club of Canada

Acknowledgements:

Golden Retriever Club of Canada Breed Standard/Judge's Education Committee
2004 Committee: Ainslie Mills (Chair), Carole Brechbill, Gerry Cormier.
2022 Revision Committee: Ainslie Mills (Chair), Louise Grant, Karin Klouman, Kim Sheehan

Illustrations

Copyright by Marcia R. Schlehr, Clinton, Michigan. Produced for exclusive use of the Golden Retriever Club of Canada. Not to be reproduced without permission.

Range of Colour photos
Liz Russell

Historical photos
Barrie Mills

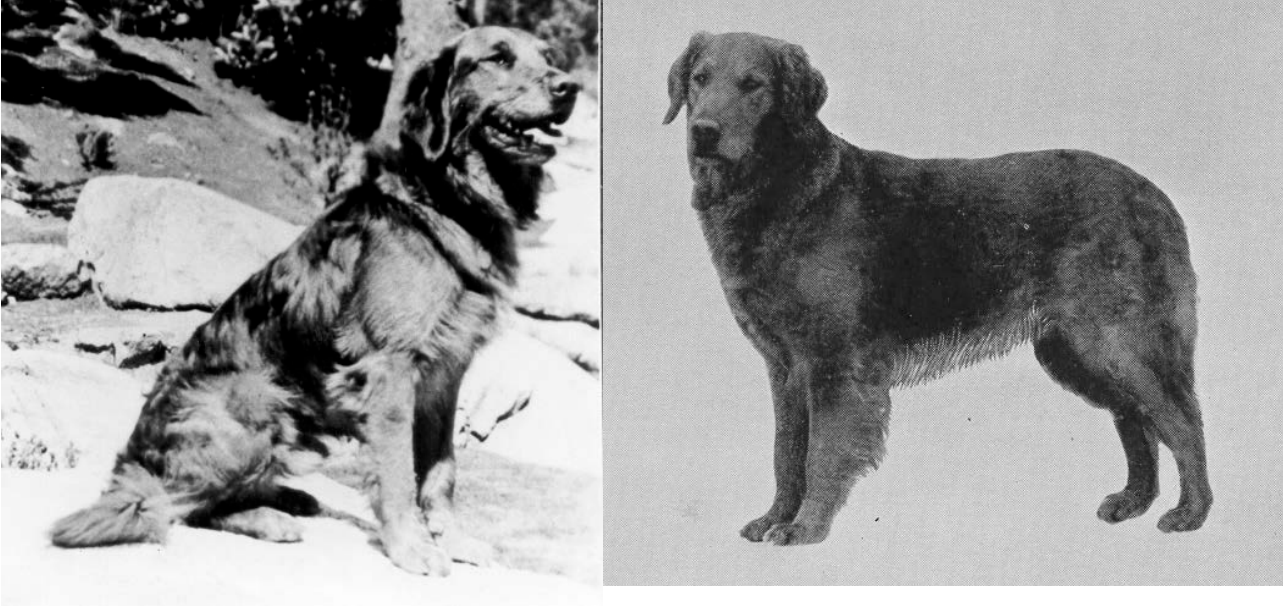
Copied from originals in the collection of the late Mr. Christopher Burton.

Field photos by Barb Loree
Head and feet photos by Ainslie Mills



Copyright 2000. Revised 2023. Golden Retriever Club of Canada.
Not to be reproduced, in whole or in part, without written permission of the G.R.C.C.

Historical Background:



Am. Can. Ch. Speedwell Pluto

The Golden Retriever was developed in the mid to late 1800's in England and Scotland, largely through the efforts of the first Lord Tweedmouth, Sir Dudley Marjoribanks, on his Guisachan estate in the Scottish Highlands. A yellow, wavy-coated male, purchased by Lord Tweedmouth from a litter of black pups, when bred with the Tweed Water Spaniel and with additional outcrosses to the Irish Setter and Bloodhound in subsequent generations, saw the evolution of this retriever into an excellent gentleman's shooting companion with superb scenting abilities. The breed was designed for use on both upland game (fur and feather) and as a water retriever. The Kennel Club in England recognized the yellow or golden retriever as a distinct breed in 1911 with the Canadian Kennel Club granting recognition in 1927.

The foundation of the breed in North America owes a great deal to Col. Samuel Magoffin and his Rockhaven Kennels in North Vancouver, B.C. In 1930, Col. Magoffin imported Am.Can. Ch. Speedwell Pluto, one of the major foundation sires of the breed on this continent. This dog won the first Best in Show ever won by a Golden Retriever in North America at the Puget Sound Kennel Club in December 1933 and was also used regularly as a hunting companion.

The Golden Retriever, due to its temperament and its versatile nature, has developed over the years into one of the most popular breeds. As a hunting companion, field trial and obedience competitor, tracking dog, show dog, search and rescue team member, avalanche rescue dog, drug detection dog, guide dog for the blind, assistance dog for the handicapped and beloved family pet, the versatile Golden Retriever demonstrates the necessity of maintaining correct type, soundness and temperament in the breed so that it can continue to function in these diverse roles.

The Essence of the Breed

The "essence of the breed", for any breed, is those characteristics that define breed type. These are the characteristics that uniquely identify one breed of dog from another, one breed of the retriever breeds from the others. The retriever breeds can be grouped together based on their function as hunting companions, designed to bring back shot or wounded game to the hunter from both land and water. All retrievers must display stamina, with efficient, athletic movement, moderate size and substance, and a weatherproof, water-resistant coat. Within this grouping of retrievers, differences in physical appearance and temperament evolved from areas of specialization due to hunters' preferences, the type of game hunted and/or the nature of the terrain where the dogs were worked.

Type in the Golden Retriever can be captured in knowing and understanding the correct requirements of breed outline, breed character, head, coat, colour and function. While these qualities will be discussed in greater detail in this Commentary, it is important not to emphasize any one aspect over another. The overall general appearance of the dog and his ability to perform its original function as a steady, capable, soft-mouthed retriever of waterfowl and upland game must be first and foremost considerations. The Golden Retriever is "primarily a hunting dog".

Breed outline, as represented by the silhouette following, combines the correct proportions and structural balance which make the Golden Retriever readily identifiable from any other retriever or dog breed. Breed character combines the temperament, attitude and basic friendly, gentle nature for which this breed is known. Colour may be seen as a fine point, but it must fall within the range of gold outlined in the breed standard, from cream to darkest gold. The head is a hallmark of the breed, but not to be emphasized at the expense of the rest of the dog. The head and expression should reflect both the retriever's functional requirements and the Golden character and temperament. Each of these characteristics will be further clarified and expanded upon in the following commentary.

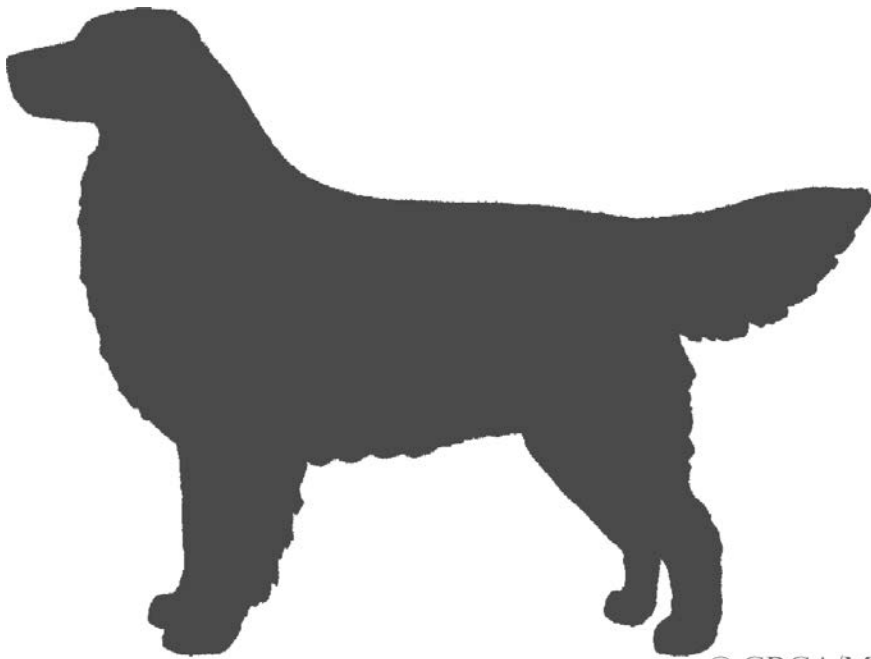


Primarily a hunting dog...

The breed's function dictates the requirements of the breed standard. A retriever must have strength, stamina, endurance, agility and perseverance.



A Commentary on the Breed Standard for the Golden Retriever



© GRCA/M. Schlehr

General Appearance:

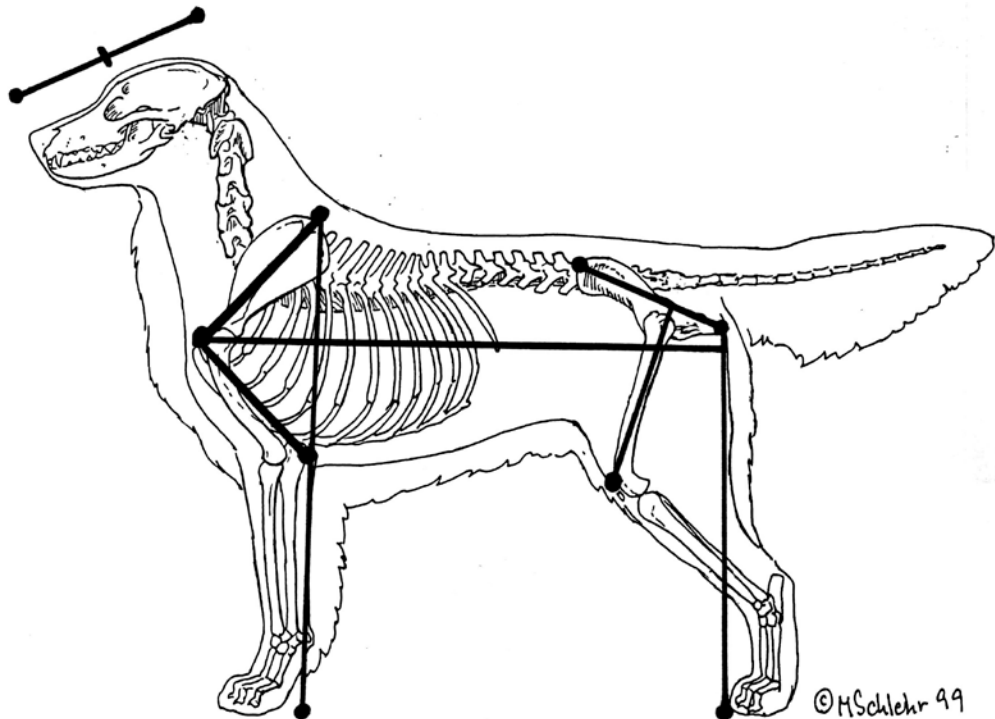
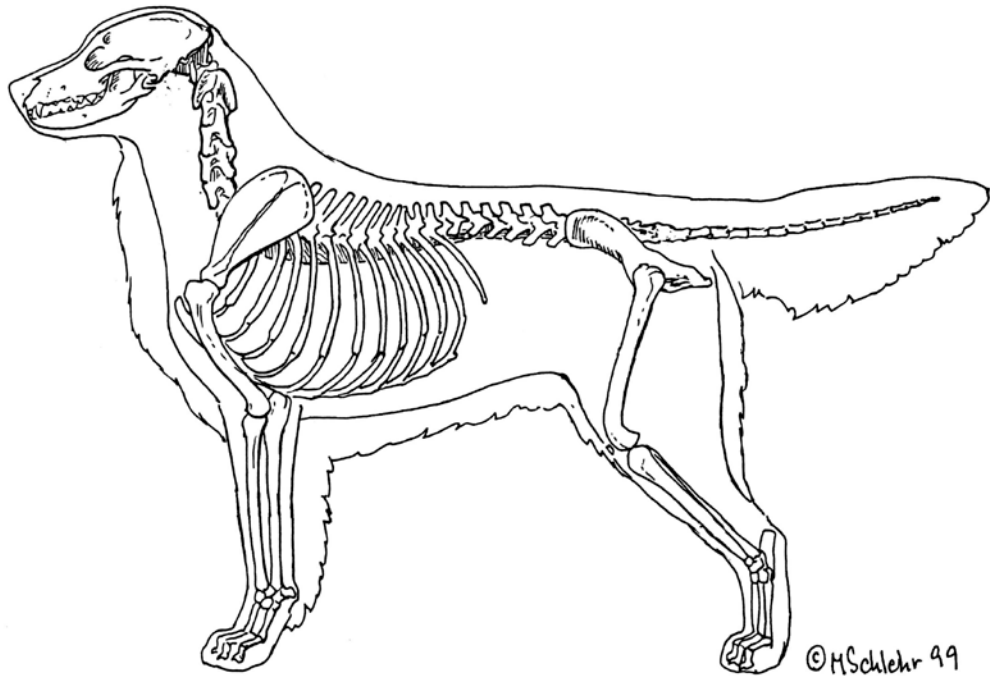
A symmetrical, powerful, active dog, sound and well put together, not clumsy or long in the leg, displaying a kindly expression and possessing a personality that is eager, alert and self-confident. Primarily a hunting dog, he should be shown in hard working condition. Over-all appearance, balance, gait and purpose to be given more emphasis than any of his component parts.

Commentary: The general appearance section captures the essence of the Golden Retriever as a dog of moderation and as a true sporting dog. To assess overall appearance, it may be useful for judges to study a silhouette of the breed and create a mental picture of the correct outline of the Golden Retriever. An outline, without influence of coat colour, animation, handling or grooming, allows one to assess overall proportion, the head properties in profile, the breadth and balance of the fore and hind quarters, length of neck, level topline, proper croup and tail set and carriage. The correct blending of all these properties creates the overall balance and harmony required in the Golden Retriever and exemplifies the phrase “well put together”.

Often seen as the glamour dog of the sporting group, sometimes style has been placed over the substance of the standard. When assessing the breed, it is important to remember the Golden Retriever consists of more than coat and attitude. The words “cute” and “pretty” do not appear in the standard. There is nothing more attractive, however, than a sound, athletic well put together dog in prime condition. The Golden Retriever should appear athletic, agile, and supple with the strength and stamina to stand a day’s work in the field. Muscles should be firm and developed without being overdone, a picture of a conditioned athlete. The Golden Retriever is a versatile breed capable of many functions, all of which benefit from a moderately sized dog with correct structure, temperament and size.

Proportion:

The Golden Retriever is a “normal” canine type with a standard canine structure.



Head: Length of muzzle approximately equals the length of skull.

Height: The distance from withers to elbow should approximately equal the distance from elbow to ground.

Height to Length ratio: approximately 11:12 when measured from withers to ground and from prosternum to pinbone.

Bone lengths: The scapula and humerus should be approximately equal in length, as should the pelvis, femur and tibia/fibula in the rear. As a guideline for the eye, the angulation between the scapula and humerus and pelvis and femur should approach ninety degrees.

A vertical line drawn from the pinbone to the ground should drop through the nails of the rear foot.

A dog with the correct proportions and angulation can thereby achieve **static balance**.

Temperament:

Friendly, reliable, trustworthy. Hostility or aggressiveness towards other dogs or people, undue timidity or nervousness in normal situations is not in keeping with the character of the Golden Retriever. Dogs displaying poor temperament should be excused from the ring.

Commentary: As described in the general appearance section, the Golden Retriever should be eager, alert and self-confident. Any dog whose behaviour, carriage or body language indicates hyperactivity, aggressiveness, lack of confidence or shyness is not displaying true Golden character. Ears pinned to the side of the head, whites of the eyes showing, a stiff upright tail, a crouching or slinking posture in the stack or on the move could be indicative of incorrect temperament. The Golden Retriever should be friendly, responsive to people, receptive to other dogs and adaptable to most situations.

Size:

Males, 23-24 inches (58-61 cm.) in height at withers; females, 21 ½- 22 ½ inches (55-57 cm.). Length from prosternum to ischial tuberosity (point of buttocks) slightly greater than height at the withers in ratio of 12:11. The distance from the top of the withers to the point of elbow and from point of elbow to the ground should be approximately equal. Weight for dogs, 65-75 lb. (29.5-34 kg); bitches, 55-65 lb. (25-29.5 kg.)

Commentary: With an emphasis on moderation, preference should be given to those dogs falling within the desirable size limits. Those falling outside the recommended height but within the allowable range should be faulted to the degree that size might interfere with their efficiency as a working retriever. Many Goldens today are in excess of the suggested weights and coarse, overdone dogs should be considered seriously faulty. Please note that there is no size exemption for puppies concerning the breed disqualification for size. Often Golden Retriever puppies do not meet size standard until they are over six months of age and therefore should not be shown until they meet the requirements of the breed standard.

The 12:11 ratio of proportion indicated in the standard indicates a dog only slightly off square. Correct proportions are important in maintaining the correct outline and functionality of the breed. The underline of the dog should appear relatively short. A dog which is too long in body and too short on leg cannot function as an efficient retriever. The measurement of withers to elbow should be approximately equal to the measurement from elbow to ground. Structure of the fore and hind quarters should reflect nearly equal bone lengths of scapula and humerus, and pelvis, femur and tibia, to present a picture of correct balance. Viewed from the side, there should be good width across both the fore and hind assembly if correctly angulated. This contributes to the overall length of the dog when properly measured from prosternum to point of buttocks, or ischial tuberosity.

Coat:

Natural appearing, resilient, dense and water repellent with good undercoat. Texture not as hard as that of a short-haired dog nor silky as that of a setter. Lies flat against body and may be straight or wavy. Moderate feathering on back of forelegs and heavier feathering on front of neck, back of thighs and underside of tail. Un-trimmed natural ruff.

Commentary: The coat should provide a protective, waterproof jacket, with a dense undercoat. The Golden Retriever should be presented as a natural hunting breed, therefore excessive grooming and/or trimming and sculpting is not appropriate for the breed. A Golden with a correct coat will require a minimum of grooming. Excessive coat and furnishings are not in keeping with the function of the Golden as a hunting dog. Modern grooming techniques often create the appearance of an incorrect open coat. Blow-drying and the application of various grooming products can cause the coat to stand out from the body in an attempt to create an illusion of more bone or substance.

The coat should lie flat against the body and have a firm, resilient texture to allow for the shedding of water, protection from debris in the field and the quick drying of the coat when retrieving. Soft, limp or silky coats are too absorbent and lack the protective qualities of a correct coat. Please note that a wavy coat, especially noticeable along the backline and rear of the dog, is perfectly acceptable and is often reflective of correct texture in the coat.

Colour:

Lustrous golden of various shades, ranging from cream to darkest gold. Feathering may be lighter than rest of coat. A few white hairs on chest permissible but not desirable. Allowable light shadings are not to be confused with white markings.

The acceptable range of colour in the Golden Retriever is broad. Coat colour can range from cream to a darker coppery gold, without preference. Any dogs within this range of colour should be considered equally, based on their merits, including balance, head type, movement and structure. In Canada, there is a broader range of acceptable colouring than allowed in the AKC standard. Many of the early Golden Retrievers were very rich coloured and these rich colours are still present in the breed. Cream was added to the English standard in 1936 due to the growing popularity of the colour and its place within the early development of the breed. This range of colours and shadings is perfectly acceptable and is a pleasant variation within the breed. Generally, the feathering, underparts and tail plume are lighter in colour than the body coat. A Golden's body colour tends to darken over several years to the colour of the ears, so ear colour should be considered in an otherwise very pale puppy. A flat tan or plain brown coloured dog, (i.e., not lustrous or displaying a golden hue) is to be faulted.

Golden Retrievers grey at various ages, often as early as five or six years, commencing at the muzzle and often progressing throughout the coat with passing years. This should not be penalized in a quality exhibit. Noticeable areas of black or any other off colour in the coat are to be faulted.



The above photo illustrates the limits of the acceptable colour range for the Golden Retriever.



“Lustrous golden of various shades” this photo illustrates the broad range of acceptable colour in the Golden Retriever.

Head:

Broad in skull, slightly arched laterally and longitudinally without prominence of frontal or occiput bones. Good stop. Foreface deep and wide, nearly as long as Skull. Muzzle, when viewed in profile, slightly deeper at stop than at tip; when viewed from above, slightly wider at stop than at tip. No heaviness in flews. Removal of whiskers for show purposes optional.



Gender differentiation should be evident.

Commentary: The head is one of the hallmarks of the breed. It should be clean-cut and chiselled with a warm, friendly, gentle expression. Expression, which is made up of eye shape and colour, skull structure, ear placement, shading in the coat, and pigment is very important in this breed. While the expression is best determined with the ears alert, the conformation of the head should also be examined with the ears at rest and hanging naturally. There should be no wrinkling on the forehead. The stop should be a marked, short rise between the nearly parallel levels of the muzzle, which is straight in profile, and the slightly arched back skull. The stop should not be indented or abrupt as in the American Cocker Spaniel or so minimal as to resemble a “ski-slope”.

The muzzle should be approximately equal in length to the back skull and blend well into the skull. A strong muzzle with good breadth and depth and a strong under jaw is important in carrying heavy game. Lips should not hang loosely and dogs should be examined to ensure the proper jaw structure is in place and not be misled by overhanging lips. Heavy flews can collect debris and make it difficult to correctly pick up and carry game.

Whiskers are considered as an important part of the dog’s sensory abilities and on the versatile golden retriever they are generally not removed for show purposes.

Nose: *Black or dark brown, though lighter shade in cold weather not serious.*

Commentary: The nose, eye rims and lips should be dark, preferably black. A flesh-coloured or a dudley nose, (one lacking pigmentation), to be seriously faulted. Often the central portion of the nose pigment will fade during the winter months. As long as a darker pigment border exists around the edges of the nose, this is not to be considered a dudley nose and is not a serious concern. A dog with unfading, naturally dark pigment is to be preferred. A liver nose is undesirable.

Teeth: *Scissors bite with lower incisors touching inside of upper incisors. Full dentition. Obvious gaps created by missing teeth to be faulted.*

Commentary: Overshot and undershot bites are a disqualification in the breed. Full dentition is important to strong jaw structure that is necessary in a hunting breed that must retrieve both waterfowl and upland game. It is not necessary to count the teeth. The appearance in the mouth should be one of complete dentition without obvious gaps. The tooth most often missing is the lower fourth premolar. Occasionally extra teeth (generally incisors) are seen. There is occasionally a misalignment of the lower central incisors (dropped incisors) and this should be penalized only to the degree of misalignment and the resulting excessive wear to teeth. A level bite is not desirable due to the excessive wear caused by the teeth meeting

edge to edge. Judges should examine the mouth carefully for correct bite and occlusion of the side teeth.

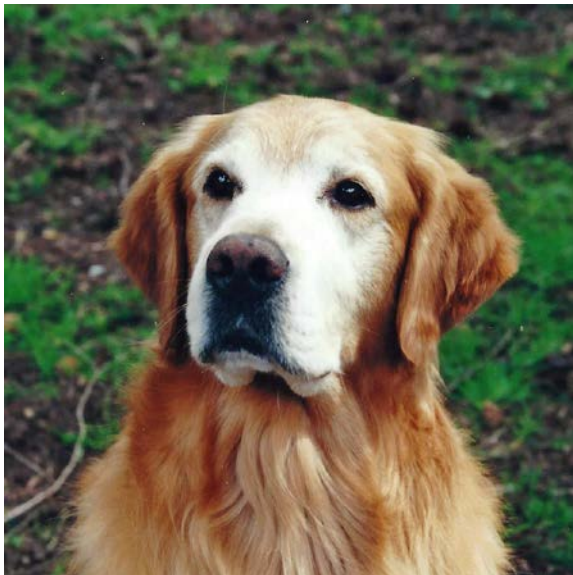
Eyes: *Friendly and intelligent, medium large, almond shaped with dark, close-fitting rims, set well apart and reasonably deep in sockets. Colour dark brown. No white or haw visible when looking straight ahead.*

Dogs showing evidence of a functional abnormality of the eyelids or eyelashes (Such as, but not limited to, trichiasis, entropion, ectropion or distichiasis) are to be excused from the ring.

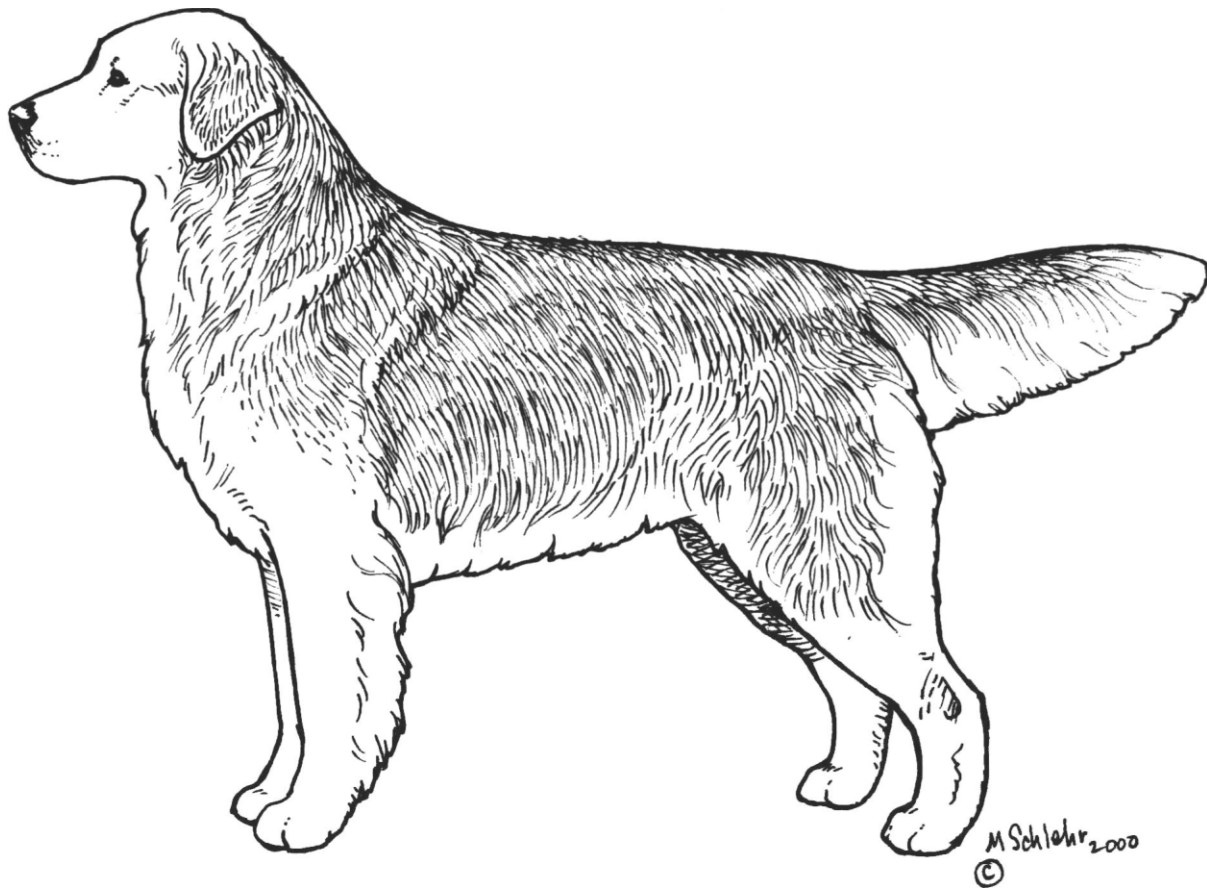
Commentary: Light eyes give a harsh, atypical look while round eyes, small triangular eyes or a slanted eye set, all detract from proper expression. The eyes should be a medium-large almond shape and dark but not black or expressionless. They should be set relatively wide apart. Close-fitting rims are an important feature in a dog working in the field and subject to debris collecting in a loose-fitting lid. While we are not asking judges to diagnose problem eye conditions, (which can only be determined by a veterinary ophthalmologist), dogs which show excessive tearing or irritation of the eye (a functional abnormality), must be excused from the ring. The listing of sample eye disorders is to make people aware that such conditions are not desirable in the breed if they affect the dog's ability to function in a normal manner.

Ears: *Rather short, hanging flat against head with rounded tips slightly below jaw. Forward edge attached well behind and just above eye with rear edge slightly below eye.*

should fall close to the head when at rest. The correctly sized ear should reach to the inner corner of the same-side eye.



Greying of the face due to aging, as seen in this lovely veteran, should not be penalized. The eager, alert expression of the Golden Retriever is best determined with the ears up, but the conformation of the head should be examined with the dog relaxed and the ears naturally at rest.



The Golden Retriever should be a dog of moderation, sound and well put together. Overall appearance, balance, gait and purpose must take priority over any component parts. To function as a powerful, active, athletic, sporting dog, the Golden Retriever must exemplify moderation in size, bone and coat.

Neck:

Medium long, sloping well back into shoulders, giving sturdy muscular appearance with untrimmed natural ruff. No throatiness.

Commentary: A strong, muscular neck is critical to the retrieving and carrying of heavy game. The ruff is a natural frame for the head and should not be noticeably stripped or cut to destroy the natural appearance of the dog. A hands-on examination will reveal if the dog has the correct length of neck under the coat. The neck should show some arch or crest between the head and the set on of the shoulders. An ewe-neck, which joins the shoulders at an abrupt right angle, or an excessively long neck, which lacks muscular strength and stamina for carrying game, are to be faulted.

Forequarters:

Forequarters muscular, well co-ordinated with hindquarters and capable of free movement. Shoulder blades wide, long and well laid back, showing angulation with upper arm of approximately 90 degrees. Shoulder blade and upper arm (humerus) should be approximately equal in length, setting close fitting elbows back beneath the upper tip of the shoulder blades. Legs straight with good bone. Pastern short and strong, sloping slightly forward with no suggestion of weakness.

Commentary: Evaluation of the front assembly requires a careful “hands on” assessment. As a guideline for the judge’s eye, the shoulder layback should approach 45 degrees. The recommended guideline of 90-degree angulation of the shoulder blade and humerus should also be seen between the pelvis and the femur in the rear assembly for correct balance to occur. The distance from the ground to the elbow should be approximately one-half the height at the withers. The Golden should never be long in leg, nor appear clumsy or too close to the ground due to insufficient length of leg. The function of the Golden as a working retriever must always be kept in mind.

Straight front angulation and short upper arms have become significant problems in the breed. Poor front assemblies are reflected in a short, choppy inefficient stride and other gait problems when the front assembly out of balance with the rear assembly. Straight shoulders are often combined with a short and/or upright neck and lack of forechest.

Body:

Topline level from withers to croup, whether standing or moving. Well balanced, short coupled, deep through the heart. Chest at least as wide as a man’s hand, including thumb. Brisket extends to elbows. Ribs long and well sprung but not barrel shaped, extending well to rear of body. Loin short, muscular, wide and deep, with very little tuck-up. Croup slopes gently.

Commentary: The back line must be firm and level. Body length should come from a well-sprung rib cage extending back to a short wide loin, not from a short rib cage with a long loin. Judges must evaluate the forequarters and body with their hands, as a dense coat and heavy ruff can mask the lack of forechest, shallow brisket or lack of rib-spring. The prosternum should be prominent with good width between the front legs and depth of chest reaching to the elbows. The area of the chest beneath the prosternum should be well filled when examined by hand.

Hindquarters:

Broad and strongly muscled. Well bent stifles. When standing naturally, angulation between femur and pelvis approximately 90 degrees, with hocks well let down. Legs straight when viewed from rear.

Commentary: The rear quarters provide the power and drive but must be coordinated with the front to be efficient and balanced. The femur and lower thigh (tibia/fibula) should be approximately equal in length. A longer lower thigh can create over-angulation and destroy balance. The thighs should be well muscled when examined. When the dog is standing naturally, the hock should fall slightly behind a line drawn from the point of the buttock to the ground.

Feet:

Feet medium size, well-knuckled, round and compact with thick pads. Excessive hair may be trimmed to show natural size and contour.

Correct feet are important to a hunting dog. Flat, hare or splayed feet without thick pads and well-arched toes must be faulted. Nails should be cut short but not so short as to be non-functional.



These feet are medium-sized, round, well-arched and compact, trimmed to show their natural outline. Note the short, slightly sloping pastern and well let down hock.

Tail:

Well set on, neither too high nor too low, following natural line of croup. Bone length extends to point of hock. When moving, carried with merry action, level with topline or with some upward curve, but never curled over back or between legs.

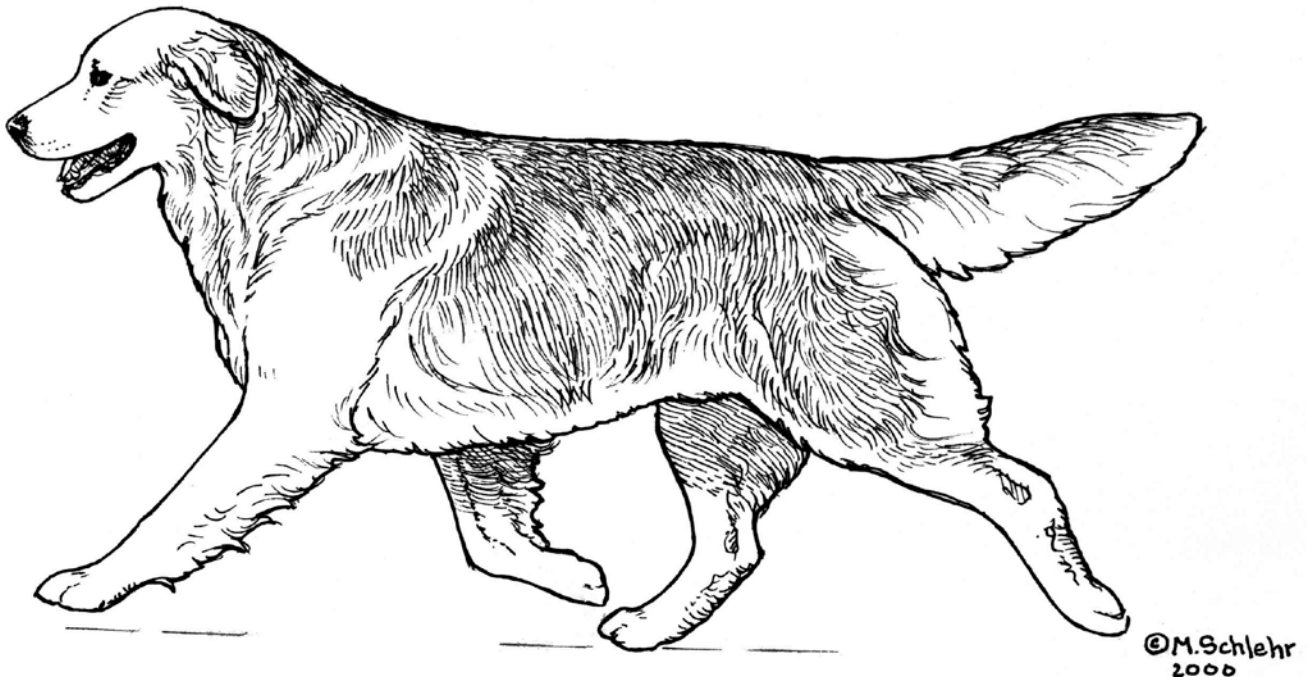
Commentary: The tail acts as a rudder in the swimming dog and as an instrument of balance in the moving dog, therefore its set and carriage are important. A high or vertical tail carriage not only destroys the correct profile of the breed but prohibits the proper functioning of the tail both in the water and when moving. The tail should be carried level with the topline or with some upward curve, but should never leave the croup at an abrupt angle.

Gait:

When trotting, gait is free, smooth, powerful, and well co-ordinated. Viewed from front or rear, legs turn neither in nor out, nor do feet cross or interfere with each other. Increased speed causes tendency of feet to converge toward centreline of gravity.

Commentary: Correct, efficient, ground-covering movement is an integral part of Golden Retriever type and function. While it appears stylish to have a “heads up” attitude when gaiting, a high head carriage, whether caused by incorrect structure or improper handling, can reflect or cause a lack of reach in the front. A dog with correct reach and drive and smooth side gait will often lower its head and neck to accomplish this efficient movement and should not be penalized. Lowering of the head assists the dog in maintaining a correct centre of gravity while in motion, or “kinetic balance”.

Dogs should be moved on a loose lead, to allow for a natural head carriage, and at a moderate speed. The gait should be smooth and well coordinated, which requires good conditioning and muscling in addition to correct structure. The topline should remain level when gaiting. A rolling or bouncing topline are indicative of incorrect structure or poor condition. At maximum extension, the feet should clear the ground with just enough clearance to change stride efficiently. Padding and excessive rear kick back are not efficient, energy conserving movements and one should not be deceived into thinking that such movement represents good reach and drive.





Balanced reach and drive with a level backline and correct tail carriage while in motion



Faults:

- ***Any departure from the described ideal shall be considered faulty to the degree to which it interferes with the breed's purpose or is contrary to breed character.***
- ***Dogs showing evidence of a functional abnormality of the eyelids or eyelashes (such as, but not limited to, trichiasis, entropion, ectropion or distichiasis) are to be excused from the ring.***
- ***Excessive coat length, open coats or limp, soft coats are serious faults.***
- ***Any alteration or modification to the natural appearance and texture of the coat or outline by use of products, sculpting, cutting or clipping, other than the trimming of the feet, tidying the ears and neatening of stray hairs is a serious fault.***
- ***Any white markings beyond a few hairs on chest, except for greying or whitening of the face or body due to age.***
- ***Any noticeable area of black or other off-colour hair.***
- ***Light, round, slant, narrow or triangular eyes, which detract from correct expression.***
- ***Dudley nose (pink without pigmentation).***
- ***Obvious gaps created by missing teeth***

Disqualifications:

1. ***Deviations in height of more than 1 inch (2.54 cm) from standard either way.***
2. ***Undershot or overshot bite. This condition not to be confused with misalignment of teeth.***

We hope that you have found the above comments helpful in understanding the Golden Retriever breed standard. It is only by judges working together with breeders that the wonderfully versatile Golden Retriever can be maintained true to its heritage as a sporting dog; a dog moderate in coat, size and substance. We would encourage all judges of retrievers to see these dogs in action at a local field trial, hunt test or working certificate test to better understand the practical implications of the breed standard's requirements. Consult the Canadian Kennel Club website or one of your local Golden, Labrador or Field Trial Clubs for more information on the time and location of these events.

Additional Information:

Information on the Golden Retriever and educational materials for judges can be found on the Golden Retriever Club of Canada web site at www.grcc.net

Bibliography of Recommended Reading:

Andrews, Wendy. Golden Retriever: The Breed Standard Illustrated, Catcombe Publications, 1999. (British book based on the UK standard).

Schlehr, Marcia R. A Study of the Golden Retriever, Travis House, 1994.

Schlehr, Marcia R. Judging the Golden Retriever: A Discussion of the Breed Standard, 2019.

Gallery of Quality Golden Retrievers

(Under Construction)





Golden Retrievers can do it all!! The lovely, moderate, female Golden pictured below has earned all the following titles:

HRCH, UH, Can. CH, MOTCH, GMH NMH, MH26, Can. WCX, TD, CGN, Am. ** WCX, CCA; GRCC VHOF, HTHOF, OBHOF, OD, MVC

